



# A750-MOD WIRELESS DIN TRANSCEIVER

## RF WIRELESS MULTIPOINT TRANSCEIVER

The Model A750-MOD is an RF transceiver with RS232/485 input/output. The transceiver can communicate with the 700 series transmitters and can be used in a point-to-point or multipoint system. The RS232/485 input/output can communicate with PLCs, HMIs and SCADA systems using Modbus RTU. An alarm relay is used to alert the user to RF link communication or power failure errors. Three radio options are available: long range 900MHz 1W, 900MHz 50mW and 2.4GHz 63mW.



## TECHNICAL SPECIFICATIONS

### Receiver Specifications

#### INPUT:

RS232/RS485 Modbus RTU; Modbus can be 2-wire or 4 wire

#### OUTPUT:

RS232/RS485 Modbus RTU, one RF link alarm relay with N.O. and N.C. contacts. Contact ratings: 0.5 A at 125 VAC, 2 A at 30 VDC

#### RECEIVER SENSITIVITY:

900MHz 1W: -110 dBm (@ 9600 BPS) 900MHz  
Optional 900MHz 50mW: -100dBm  
Optional 2.4GHz: -102dBm

#### RF POWER:

900MHz 1 Watt (+30 dBm) FHSS  
Optional 900MHz 50 mW (+17 dBm) FHSS  
Optional 2.4GHz 63mW (+18 dBm) DSSS

#### POWER

11 to 32 Vdc 5 watts maximum

#### OPERATING TEMPERATURE RANGE:

-40 to +85° C

#### RF ENCRYPTION:

Optional 256 bit (max)

## FEATURES

- 35 mm DIN Rail Mount
- Removable 2.0dBi dipole antenna
- DIP switch selectable channels
- Signal Strength indicator
- Repeaters available

## APPLICATIONS

- Tank level monitoring
- Temperature monitoring
- Alarms

#### Ordering information:

900MHz 1W: A750-MOD  
900MHz 50mW: A750-LP-MOD  
2.4GHz 63mW: A750-ZG-MOD

Specify hardware interface when ordering: RS232, RS485 2-wire, RS485 4-wire

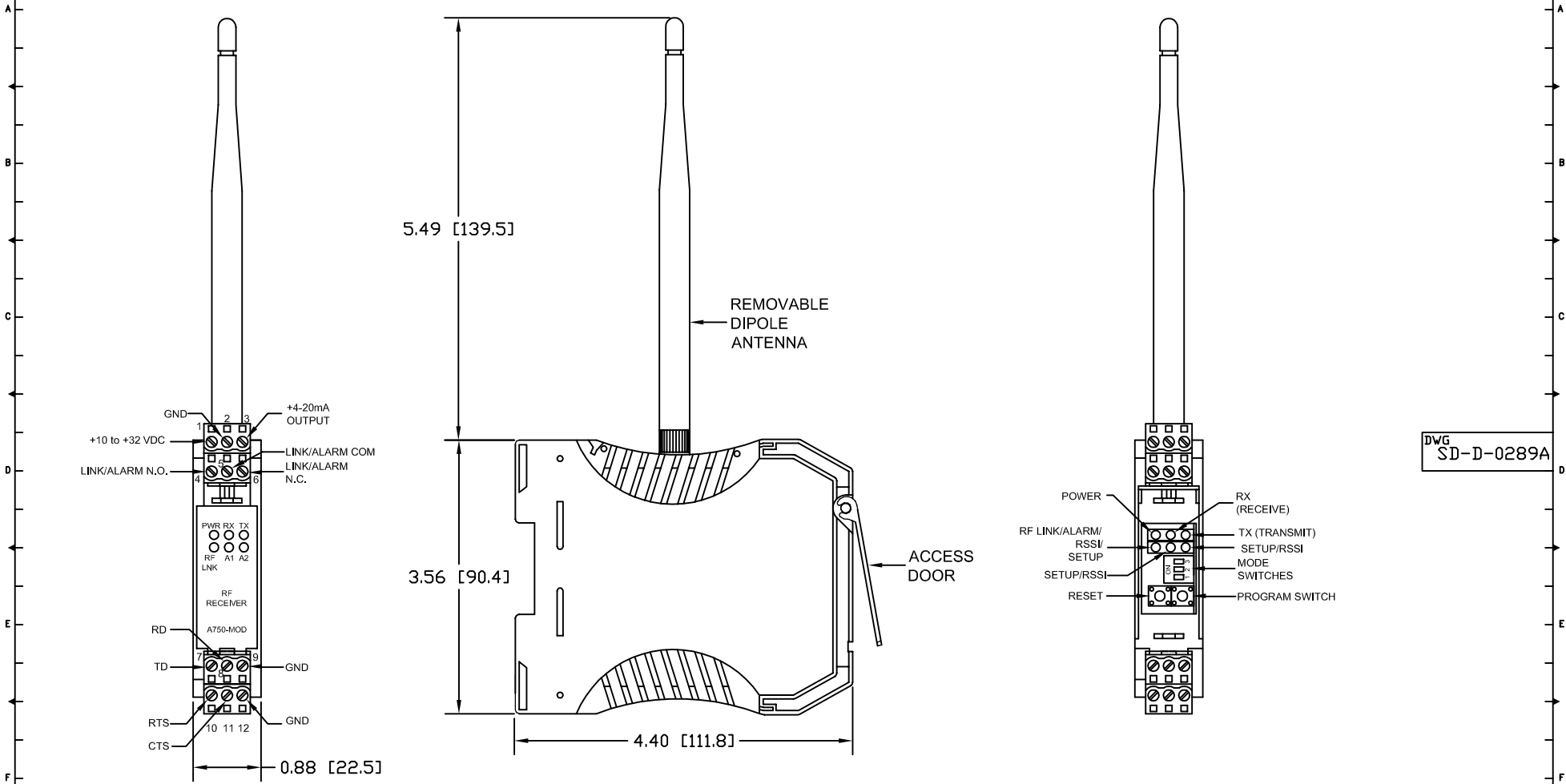
Rev. W2

DWG. NO.  
SD-D-0289A  
REVISIONS

FRONT VIEW

SIDE VIEW

INDICATORS/SWITCHES  
ACCESS DOOR OPEN



DWG  
SD-D-0289A

NOTE:  
1) DIMENSIONS IN INCHES [MILLIMETERS].

QUOTE OR ORDER NUMBER			Analylnk Wireless, LLC 790 CROSS POINTE ROAD COLUMBUS, OHIO 43230		
DIMENSIONS IN INCHES UNLESS OTHERWISE SPECIFIED			TITLE		
DIMENSION TOLERANCES UNLESS OTHERWISE SPECIFIED			RF DIN RS232/485		
FOR			A750-MOD		
DRAWN RML DATE 03/15/09			NEXT ASS'Y DWG NO. SD-D-0289A		
CHECKED DATE			APPROVED DATE		
FILE NAME SD-D-0289A					